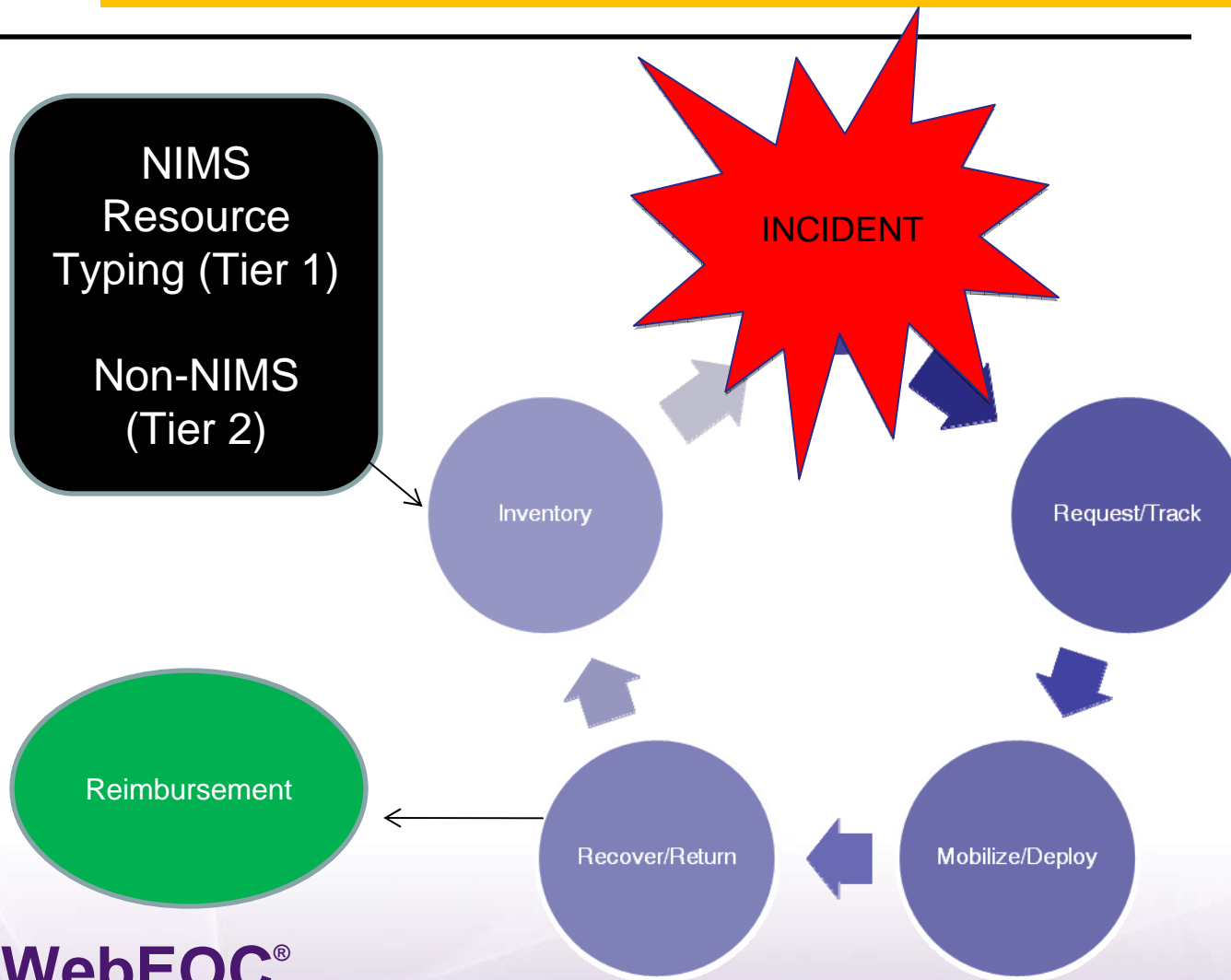


Overview

- Resource Management Lifecycle
- Resource Management Framework
- Standard Workflow Processes
- Effective Resource Management Practices
- Inventorying Resources
- Identifying Resource Requirements
- Requesting and Deploying Resources
- Common Operating Picture
- Resource Manager Incident Process (overview)
- Key Features

Resource Management Lifecycle



WebEOC[®]
Boundless Collaboration

The Power of Community

ESI[®]
If it's not ESI, it's not WebEOC

Resource Management Framework

- Establish hierarchy(ies) and permission levels for sharing resources
- Only the resource owner can deploy the resource
- A resource cannot be deployed without a request
- Identify common terminology for process workflow
- Ability to forward to the next level and request more information
- Compliant with NIMS, ICS and complements ESF structure
- Ability to tag resources as “shared” or “private”

Standard Workflow Processes

- Request
 - Submitted
 - In-Progress
 - Out-Of-Service
 - Fulfilled
- On Hold
 - Denied
 - Assigned
 - Over Due
 - Returned to Inventory

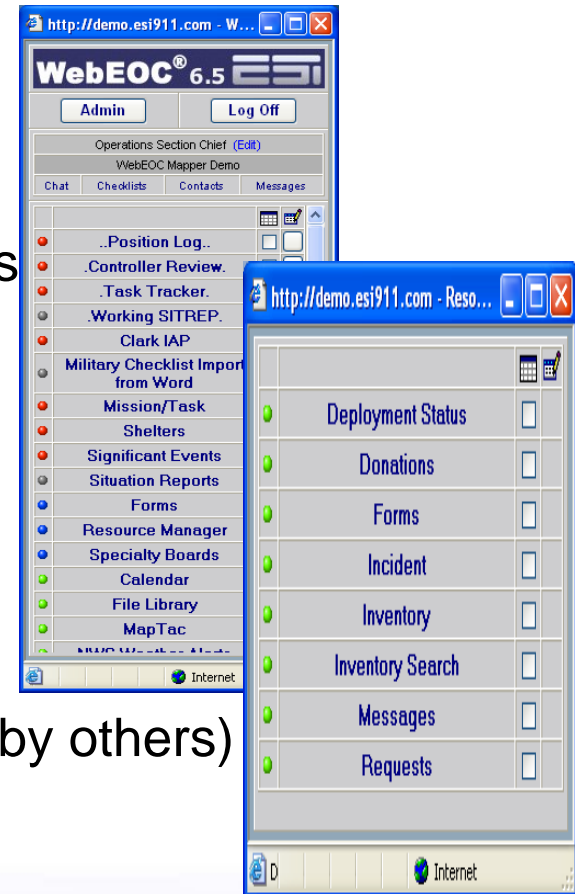
Effective Resource Management Practices

Managing Resource Requests

- Create New Request
- Deploy Resources and Adding Comments
- Completing Online Forms (i.e., EMAC)
- Sending Messages

Managing Resource Deployment

- Add “ad-hoc” Resources and
- Sharing Resources
- Tagging resources as private (not visible by others)
- Identifying Available Resources
- Returning Resources “Back to Inventory”



Inventorying Resources

- Track resource quantities and availability
- Search resource inventory
- Import/export resources
- Audit and report on resources
- Ability to manage resources definitions not defined by NIMS

Resource	Owner	Location	Address	City	County	Available	Committed	Delete
Ambulance	SC State	Aiken EMS	251 laurens st mw	aiken	Aiken	0	1	
Ambulance	SC State	Station 6	699 King St	Charleston	Florence	3	0	
Ambulance	SC State		300 Wildlife Pkwy		Aiken	2	1	
Ambulance	SC State	Station 6	300 Wildlife pkwy		Aiken	2	0	
Ambulance	SC State	Station 22	699 Broad St, Augusta Ga	Augsuta	Columbia	2	0	
Ambulance	SC State		500 Wildlife Pkwy		Columbia	3	0	
Ambulance Unit - 5	SC State	Station 1	35 Star Rd	Edgefield	Richland	1	0	

Requesting Resources

- Use standard resource request process
 - Search resource inventory
 - Multi-agency coordination:
 - the ability to forward resource request to the next level
- State  County  City
- Cross-jurisdiction coordination



Number	Incident	Time	Importance	Due	Status	From	Resource	Qty
R5	2007 PHIN	8/30/2007 1:39:46 AM	Immediate	8/30/2007 3:00:00 PM	Submitted	Mapper Use	Engine, Fire (Pumper)	1
R6	2007 PHIN	8/30/2007 5:22:42 AM	Low (1 day)	8/31/2007 5:30:00 PM	Submitted	Operations Section Chief	Ambulances (Ground)	1
R2	Jacksonville FL	8/30/2007 5:32:27 AM	Urgent	2/2/2007 6:00:00 AM	Submitted	Operations Section Chief	Engine, Fire (Pumper)	1
R3	Jacksonville FL	8/30/2007 5:41:38 AM	Low (1 day)	8/31/2007 3:30:00 PM	In-Progress	Operations Section Chief	Generators	1
R1	SE Florida Demo	9/10/2007 12:27:12 AM	Immediate	9/12/2007 12:00:00 PM	Submitted	WebEOC Administrator	Portable Pump	3
R1	US Army Cops of Engineers	10/2/2007 3:48:33 AM	Urgent	10/3/2007 2:00:00 PM	In-Progress	Operations Section Chief	Engine, Fire (Pumper)	1
R2	US Army Cops of Engineers	10/2/2007 3:48:34 AM	Urgent	10/9/2007 12:00:00 AM	In-Progress	Operations Section Chief	Engine, Fire (Pumper)	1
R1	Kitland AFB	10/4/2007 5:09:43 AM	(Select One)	10/5/2007 3:00:00 PM	In-Progress	Operations Section Chief	Air Ambulance (Fixed-Wing)	2
R1	ESRI	10/16/2007 3:23:59 AM	Urgent	10/16/2007 1:00:00 PM	Submitted	Operations Section Chief	Ambulances (Ground)	2
R1	NERMS	10/17/2007 10:12:55 PM	Immediate	10/18/2007 1:00:00 PM	Submitted	Operations Section Chief	Ambulances (Ground)	1
R1	DHS	10/22/2007 10:15:54 PM	Urgent	10/24/2007 2:00:00 PM	In-Progress	Operations Section Chief	Engine, Fire (Pumper)	2

Identify Resource Requirements

- What and how much is needed?
- Where and when is it needed?
- Who will receive and use the resource?
- Did the resource arrive?
- Was the correct type of resource ordered?

Deploying Resources

- Resource owner manages process:
 - Resource group, definition and type
 - (i.e., NIMS Typing Requirements)
- Returning resource back to inventory after incident is closed-out

Address: 426 Laurens St
City: Aiken
County: Aiken
State: SC
Zip Code: -
Coordinates (X,Y): -81.8675336583148 , 35.1518836709619

Contact Information:
Name: Brian White
Email: bwhite@mail.com
Phone: 703-789-4268
Pager: 703-889-4236
Mobile: 703-889-7878

Originator: Mapper User
Request Sent To: SC State,
Due: 8/30/2007 3:00:00 PM

Comments:

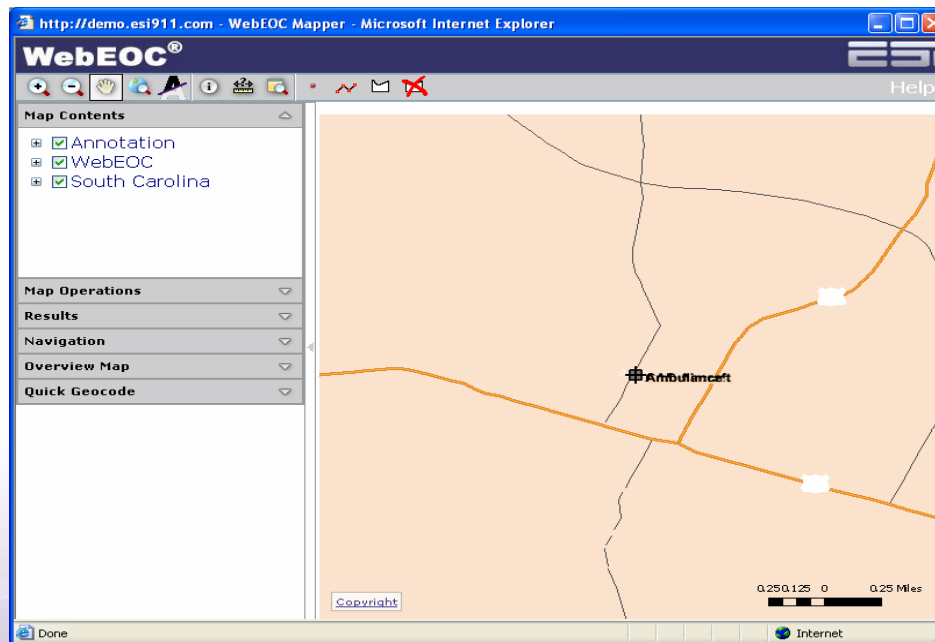
Time	User	Comment
1/8/2008 1:08:28 AM	Operations Section Chief	Status Update: Call me!
1/8/2008 1:20:32 AM	Operations Section Chief	arrived with little gas.
1/8/2008 2:16:52 AM	Operations Section Chief	Status Update:
1/8/2008 2:17:44 AM	Operations Section Chief	Status Update:
1/15/2008 3:05:56 AM	Operations Section Chief	CA is good place to live
1/15/2008 3:08:36 AM	Operations Section Chief	Status Update: ETA 15 mins.
1/30/2008 11:41:16 PM	Operations Section Chief	Status Update: ETA 25 mins
2/11/2008 2:29:05 AM	Operations Section Chief	Status Update: ETA 15

Deployments:

Returned to Inventory	Date	Resource	Location	Address	Quantity	Total Cost	From LSA?
<input checked="" type="checkbox"/>	8/31/2007 12:23:36 AM	Pumper	Staging	426 Laurens St	1	0.00	No
<input checked="" type="checkbox"/>	1/22/2008 5:57:10 AM	Fire Engine 1	Staging	426 Laurens St	1	750.00	No

Common Operating Picture

- Identify incident location on a map (i.e., GIS)
- Identify the population within an affected area and the demographics of the affected population
- Identify available resources within a defined region for respond



WebEOC®
Boundless Collaboration

The Power of Community

ESI®
If it's not ESI, it's not WebEOC

Resource Manager Incident Process

Review Incident Response Process

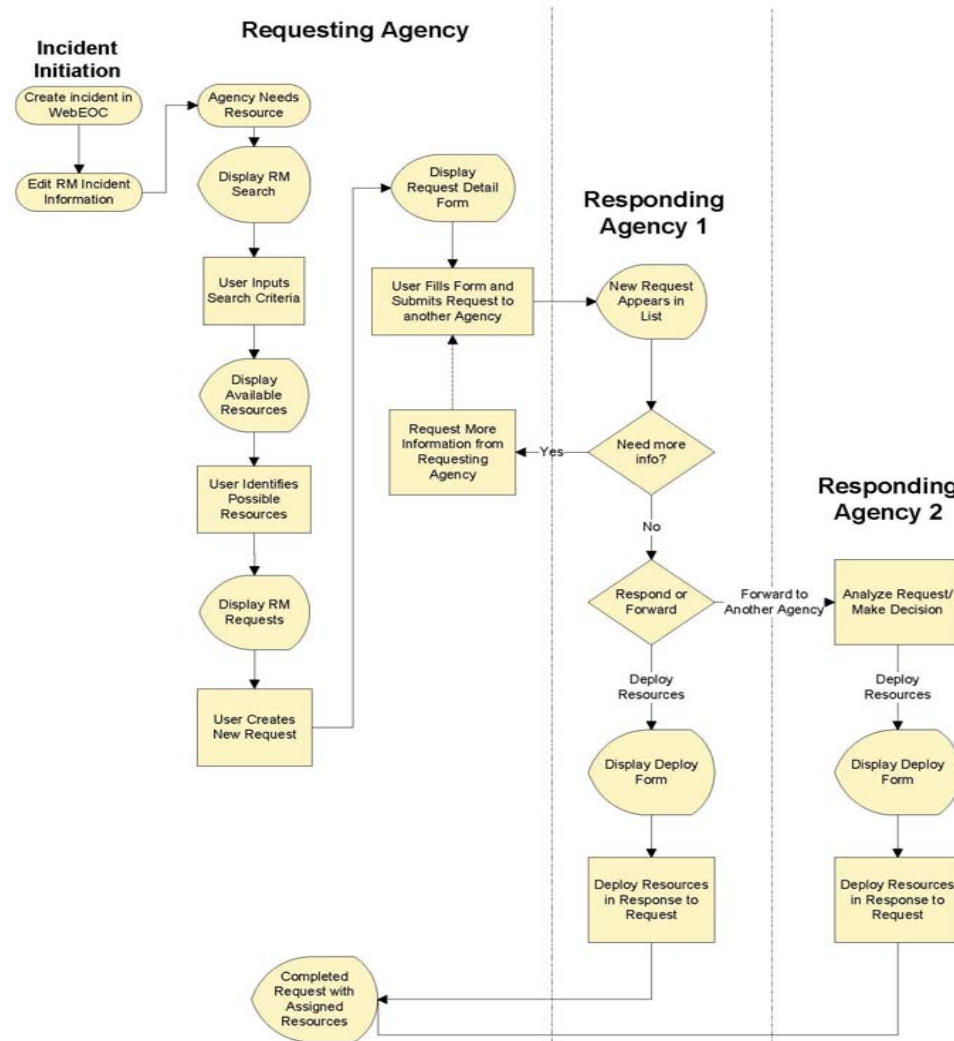
WebEOC[®]
Boundless Collaboration

The Power of Community

ESI[®]
If it's not ESI, it's not WebEOC

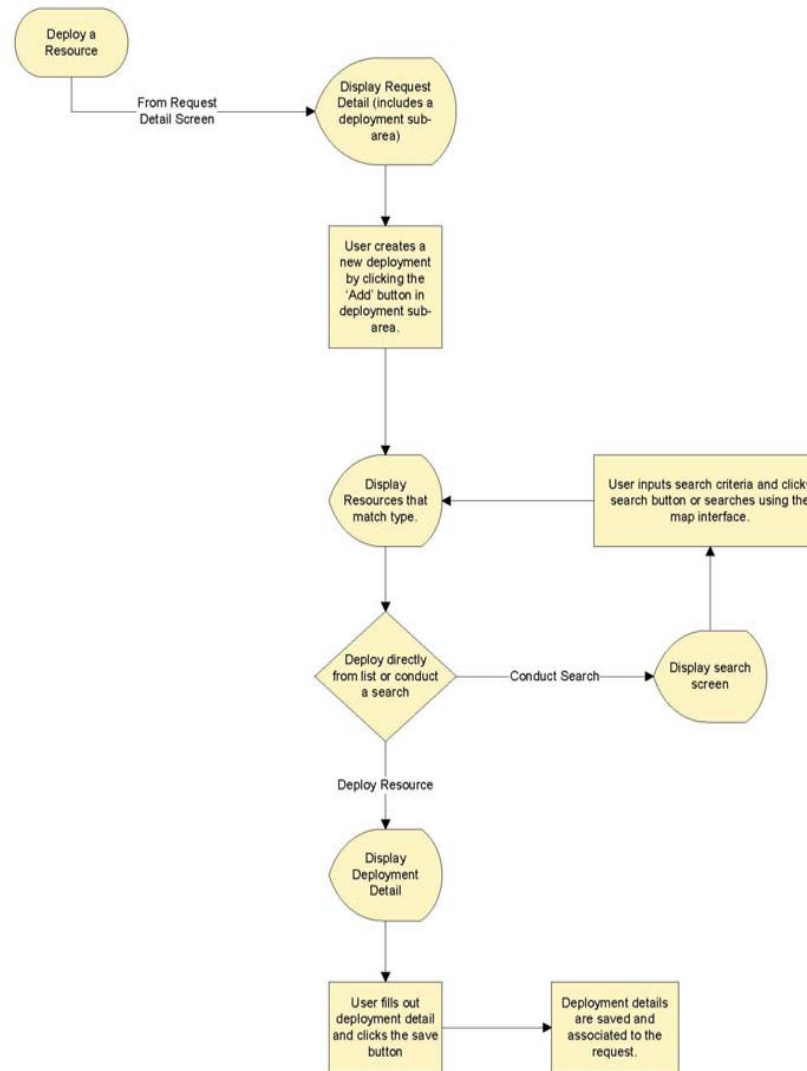
Incident Response Process: Resource Request Flow

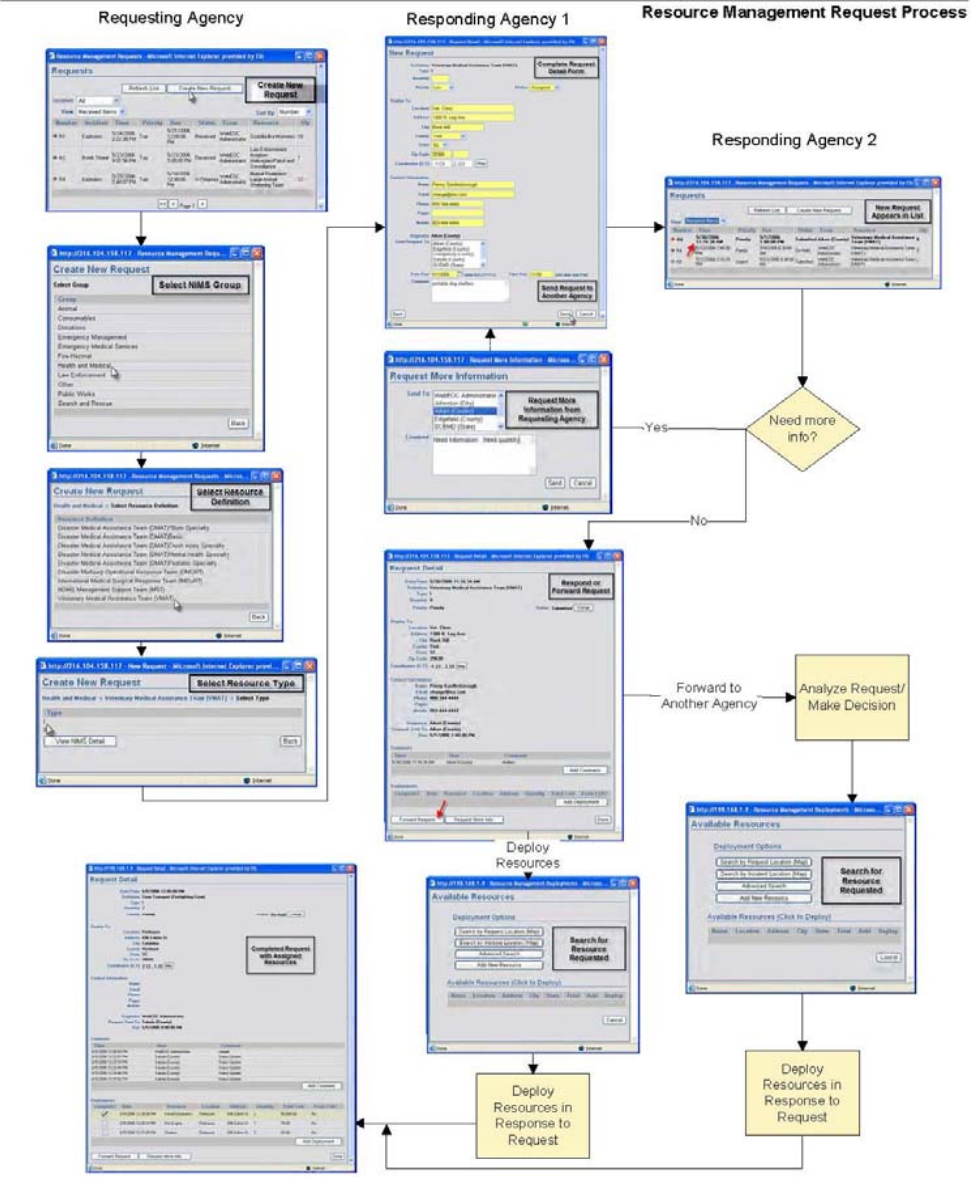
Incident Response Process:
Resource Request Flow



Incident Response Process: Responding Agency

Incident Response Process: Responding Agency





Key Features

- Catalog and track resources during incident through request and deployment processes
- Prepare and track EMAC forms “electronically”
- Audit log and add resources “on the fly”
- Configurable to support existing processes
- Prepare reports and audit logs of resource management activities

Questions?



CONTACT INFORMATION

Author: Jerome A. DuVal, M.S.W.
Vice President, Government Relations & Federal Services

ESi Acquisition Inc.
National Capital Region Office
1101 Pennsylvania Ave., NW 7th Floor
Washington, DC 20004
WK 202.756.2224
Cell 202.641.8794
E-mail: jduval@esi911.com

WebEOC[®]
Boundless Collaboration

The Power of Community

ESI[®]
If it's not ESI, it's not WebEOC